



# EXCELON RANGE

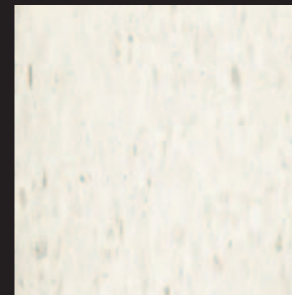
COMMERCIAL FLOORING  
VINYL TILE

VINYL TILE / Vinyl Sheet / Linoleum

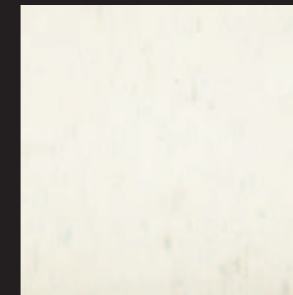
## EXCELON DESIGNER

(2mm & 3mm gauge - 300mm x 300mm tile)

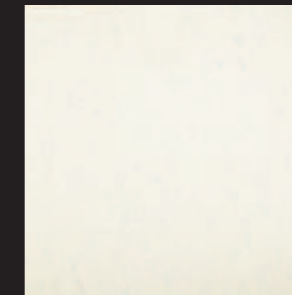
R9 SLIP RESISTANCE



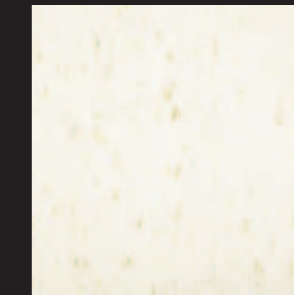
MIST WHITE



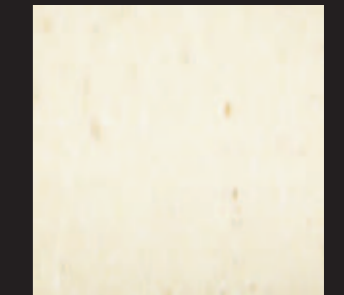
MITCHELL WHITE



FOAM WHITE



OCEAN WHITE



CLASSIC WHITE



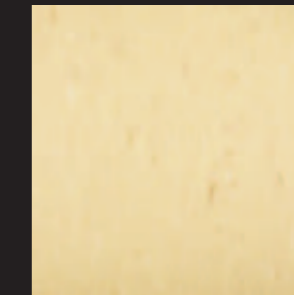
MERINO CREAM



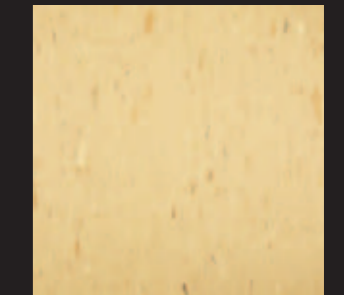
VANILLA



CARAMEL



SANDSTONE



RIVER CLAY



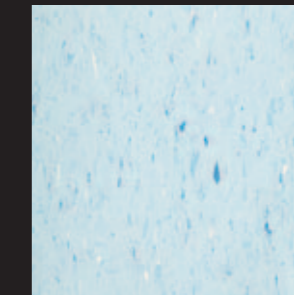
TASMAN TAN



EUCALYPT



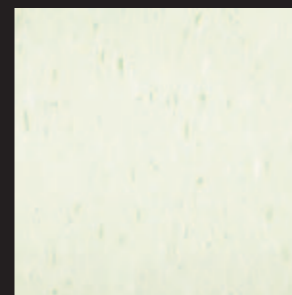
MOUNTAIN BLUE



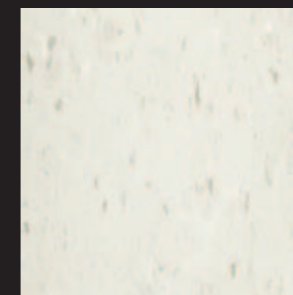
SUMMER SKY



SAPPHIRE COAST



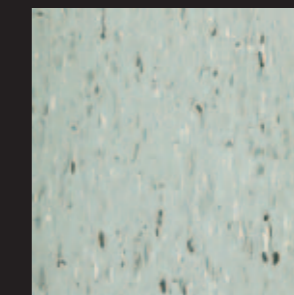
HONEY DEW



MELBOURNE GREY



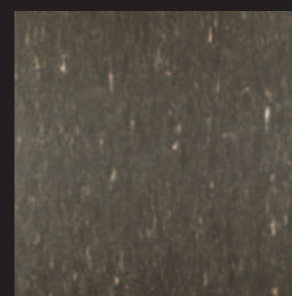
PEWTER



GUNMETAL GREY



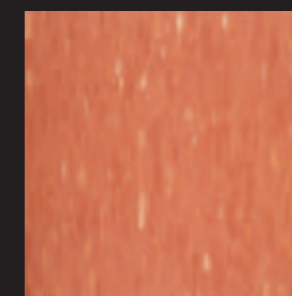
GULL GREY



CHOCOLATE



BLACK



RED OCHRE

Variations may occur between photographic images, samples and batches in terms of colour, shade, pattern or similar.



# EXCELON TILE

## PRACTICAL

- Economical
- Modular 300mm x 300mm tile format
- 2mm and 3mm gauges for varying applications and price points
- Exact edge finish, uniformity of size and squareness
- Endlessly flexible design opportunities
- Quick to install and traffic, less down time to opening
- Easy to repair

## DURABLE

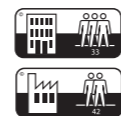
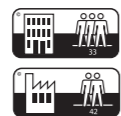
- > 80% natural stone
- Outstanding stability and durability
- Improved surface with excellent resistance to soiling

## APPLICATIONS

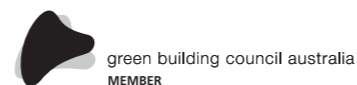
- Retail
- Housing
- Education
- Transport
- Health care
- Back of house

## TECHNICAL DATA

	DESIGNER, TERRAZZ & STONETEX	STEPFAST
Product Type (EN 654)	Vinyl Tile	Vinyl Tile
Manufactured in	Australia	Australia
Tile size (EN 427)	300mm x 300mm	300mm x 300mm
Overall thickness (EN 428)	2.0mm & 3.0mm	3.0mm
Slip resistance (AS/NZS 4586) Appendix A: Wet pendulum Appendix D: Oil-wet ramp	Y R9	X R10
Fire resistance (ISO 9239-1) Critical radiant flux Smoke development rate	> 11 kW/m <sup>2</sup> < 750% minutes	> 11 kW/m <sup>2</sup> < 750% minutes
Classification (EN 685)	Commercial: 33 Industrial: 42	Commercial: 33 Industrial: 42



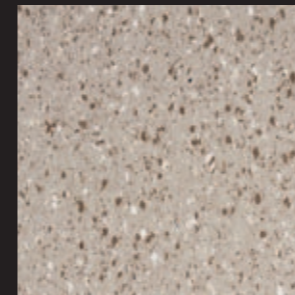
Visit [www.armstrongflooring.com.au](http://www.armstrongflooring.com.au) or contact **Customer Service 1800 632 624** for technical data, installation, cleaning and maintenance instructions.



## EXCELON TERRAZZ

(2mm & 3mm gauge - 300mm x 300mm tile)

R9 SLIP RESISTANCE



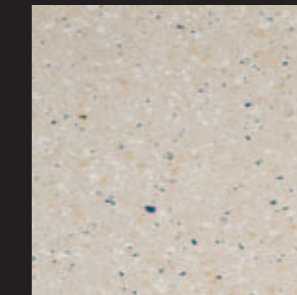
CAPPUCCINO



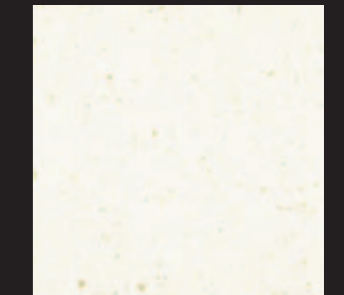
TORINO GREY



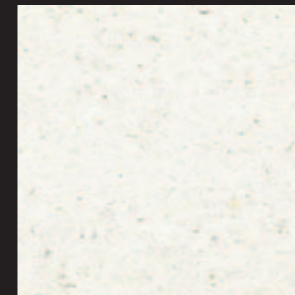
ARGENTO



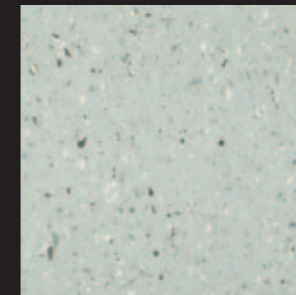
PANNACOTTA



BIANCO



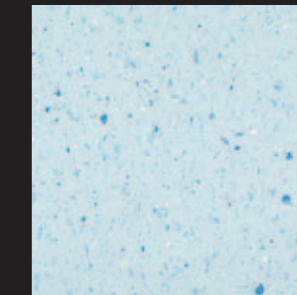
NEBIA GREY



MILANO GREY



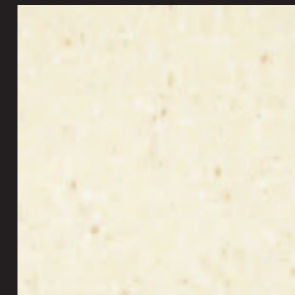
PISTACHIO



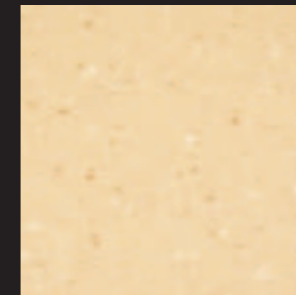
AZZURRO BLUE



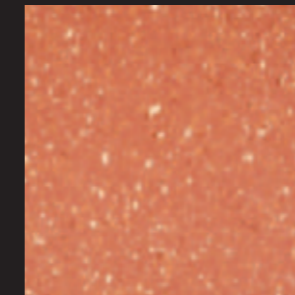
MARÉ BLUE



MARBLE



PALAZZO

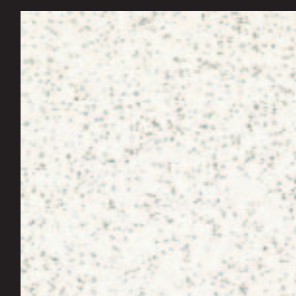


BOLOGNA RED

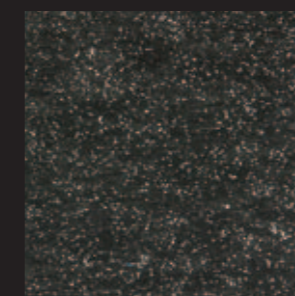
## EXCELON STONETEX

R9 SLIP RESISTANCE

(2mm & 3mm gauge - 300mm x 300mm tile)



CHALK



COAL



PUMICE



GRAPHITE

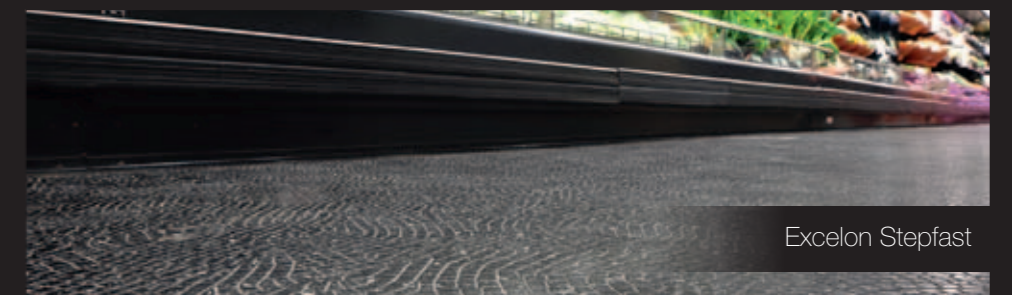
## EXCELON STEPFAST

R10 SLIP RESISTANCE

(3mm gauge only - 300mm x 300mm tile)



BLACK



Excelon Stepfast

Variations may occur between photographic images, samples and batches in terms of colour, shade, pattern or similar.