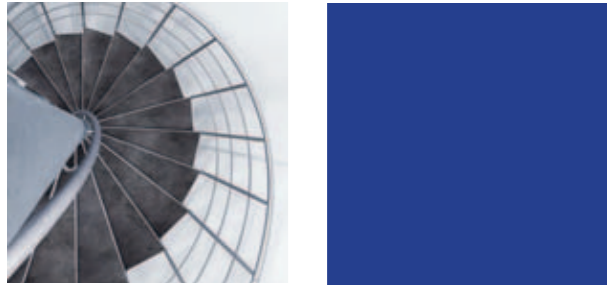


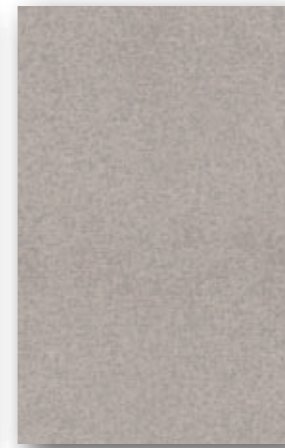
TRANSLATIONS TIMBERLINE POSSIBILITIES



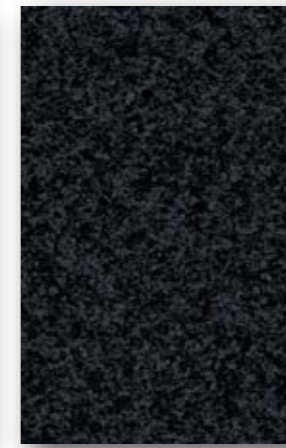
TRANSLATIONS



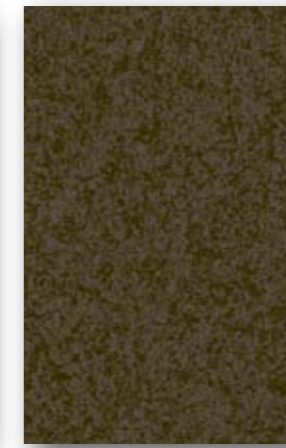
Tweed/Soothsayer



Tweed/Slight of Hand



Sidecar/Last Call



Sidecar/Uptown



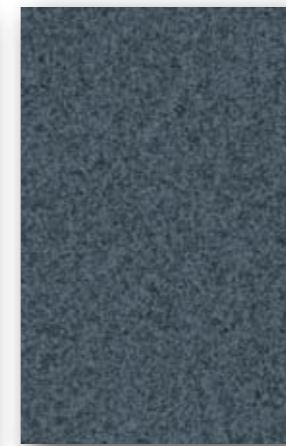
Sidecar/Sidewalk



Lithos Stone/Phyllite



Lithos Stone/Andesite



Sidecar/Meter Maid



Sidecar/Downtown



Sidecar/Central Park



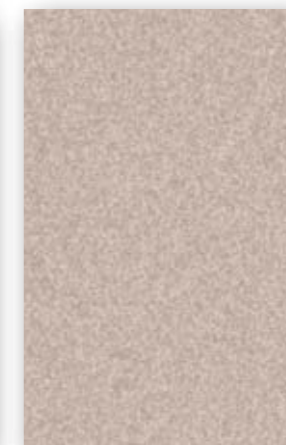
Lithos Stone/Bojite



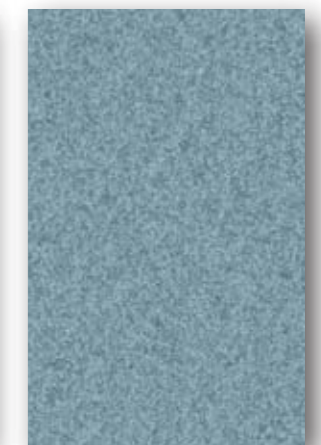
Lithos Stone/Anthracite



Sidecar/Subway



Sidecar/Cabby



Sidecar/Borough

TECHNICAL INFORMATION

| TECHNICAL DATA | | TIMBERLINE, TRANSLATIONS | | | | POSSIBILITIES | |
|--------------------------------|---------------------------|--|---------------------------|---|----------------------|---|--|
| Type of floor covering | | Heterogeneous Sheet Vinyl | | | | Inlaid Chip Sheet Vinyl | |
| Manufacturing Standard | | EN 649 | | | | EN 13413 | |
| Classification | EN 685 | Commercial: 33 | | Industrial: 42 | | Commercial: 34 Industrial: 43 | |
| Surface treatment | | PUR | | | | PUR | |
| Wear Resistance | EN 660-1 | Group T | | | | Group T | |
| Wear layer thickness | EN 429 | 0.55mm | | | | 1.00mm | |
| Total thickness | EN 428 | 2.00mm | | | | 2.00mm | |
| Roll Width | EN 426 | 1.83m | | | | 1.83m | |
| Weight/m ² | | 2.8 kg/m ² | | | | 2.8 kg/m ² | |
| Roll length | | 25m | | | | 25m | |
| m ² /Roll | | 45.75m ² | | | | 45.75m ² | |
| Residual indentation | EN 433 ASTM F1700-99 | ≤0.10 mm | | | | ≤0.20 mm | |
| Wear by castor chairs | EN 425 | Suitable | | | | Suitable | |
| Colour fastness | ISO 105-B02 (Method 3) | ≥6 | | | | ≥6 | |
| Impact Sound Isolation | ISO 140-8 | 4 dB | | | | N/A | |
| Flexibility | EN 435 (Method A) | 20mm mandrel, pass | | | | 25mm mandrel - pass | |
| Chemical resistance | | Good Resistance (full tests can be supplied on request) | | | | Good Resistance | |
| Dimensional stability | EN 434 (adhered) | ≤0.40% | | | | ≤0.40% | |
| Curling after exposure to heat | EN 434 | ≤8 mm | | | | ≤8 mm | |
| Seam strength | EN 684 | Pass | | | | Pass | |
| Shear force of backing | EN 432 | N/A | | | | Pass | |
| Electrical Resistance | EN 1081 | 2 x 10 ¹⁰ ohm (not 'anti static') | | | | Estimate 10 ¹⁰ ohm | |
| Static Electrical Propensity | Walking test EN1815 | >2kV (not 'anti static') | | | | N/A | |
| Fire Resistance | ISO 9239-1 | | | | | | |
| Critical Radiant Flux | | ≥8 kW/m ² | ≥8 kW/m ² | ≥8 kW/m ² | ≥8 kW/m ² | ≥8 kW/m ² | |
| Smoke Development Rate | | < 750% min | < 750% min | < 750% min | < 750% min | < 750% min | |
| Pattern | | Tweed | Lithos Stone, Sidecar | Rustic Beech | Mahogany | Bamboo, Oak | |
| Plank size (within pattern) | | N/A | N/A | Random lengths between 329-795mm x 65mm | 1269mm x 180mm | Bamboo 1255mm x 90mm Oak 1264mm x 90mm | |
| Pattern repeat (mm) | | 900 x 1250 | 900 x 1250 (half dropped) | 900 x 1250 (half dropped) | 1800 x 1250 | 900 x 1250 (half dropped) | |
| Slip Resistance AS/NZS 4586 | | | | | | | |
| Surface Embossing | | EC-1 | EC-2 | EC-3 | EC-4 | EC-4 | |
| Appendix A: Wet Pendulum | | Y | Y | Y | Y | Y | |
| Appendix D: Oil-wet ramp | | R10 | R10 | R10 | R10 | R10 | |
| Range | | 27 Patterns – 11 x wood, 1 x bamboo, 4 x stone, 9 x overall, 2 x carpet. | | | | 8 Colours | |
| Installation | | Full spread adhesive. | | | | | |
| Seaming | | Heat welded with matching weld rod, chemical seam seal (follow manufacturer's instructions). | | | | | |
| Recommended Adhesive | | Armstrong SV-200, Coving & Accessories: SC-100 Contact Adhesive or AC-100 Part A & B Acrylic Contact Adhesive, PU100 Seambond at seams. | | | | | |
| Applications | | Interior commercial areas with high traffic and light industrial areas, e.g. Medical centres, nursing homes, offices, store rooms, production halls, department stores, schools, hospitals. Also suitable for residential applications. | | | | | |
| Manufactured | | Korea | | | | | |
| Instructions | | Armstrong World Industries (Australia) Pty Ltd instructions regarding adhesives, installation, cleaning and maintenance should be observed. Please contact Armstrong for details. | | | | | |
| Warranty | | Armstrong warrants its regular (first quality) products to be free from manufacturing defects for ten (10) years from the date of purchase. This warranty is extendable to fifteen (15) years when material is installed to Armstrong recommendations using Armstrong adhesives and accessories. | | | | | |

Please note: Colours illustrated are matched as closely as possible. Variation from sample may appear.

**TRANSLATIONS
TIMBERLINE
POSSIBILITIES**



POSSIBILITIES



Ash Grey Charcoal Grey Coloured Earth Painted Desert

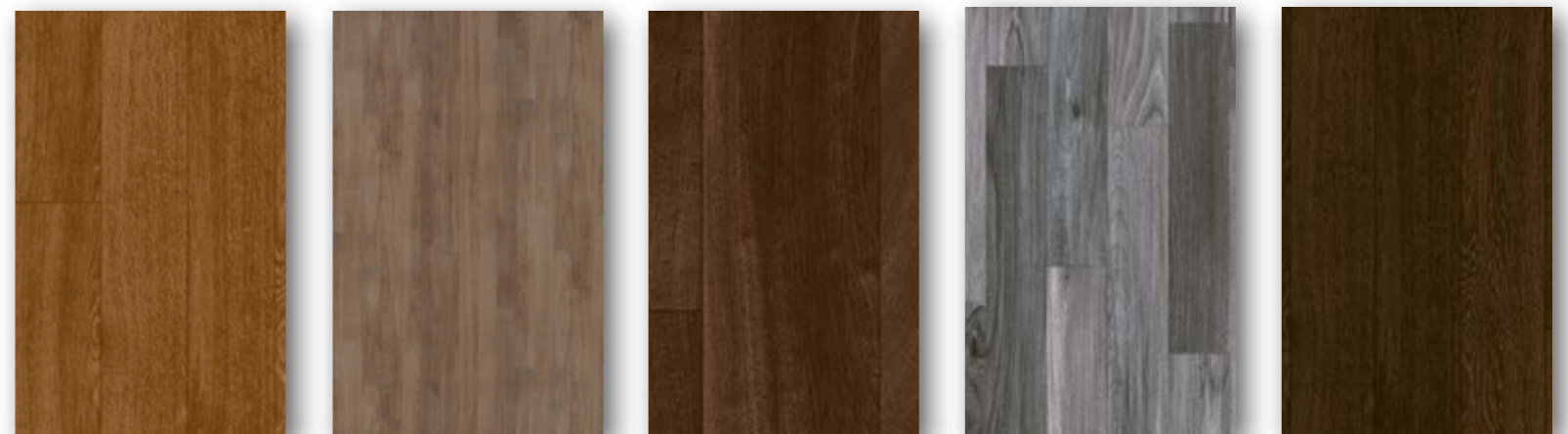


Brushed Sand Ginger Peach Blue Moon Blue Retreat

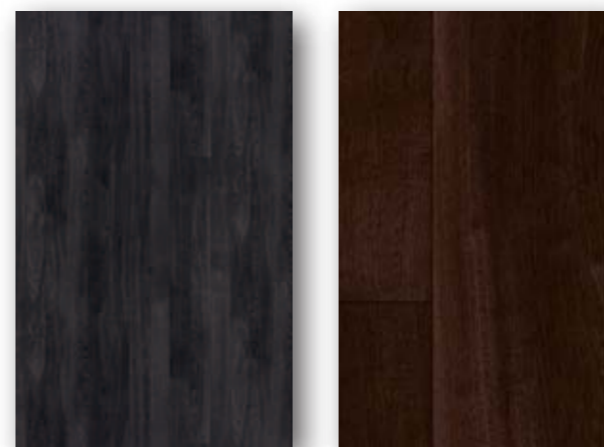
TIMBERLINE



Rustic Beech/Life is a Oak/Righteous Oak/Tried & True Bamboo/Chinchilla Rustic Beech/Hang Ten



Oak/Solid Oak/Like a Rock Mahogany/Cacao Rustic Beech/Cowabunga Oak/Level Headed



Oak/Bona Fide Mahogany/Carob

Please note: Colours illustrated are matched as closely as possible. Variation from sample may appear.